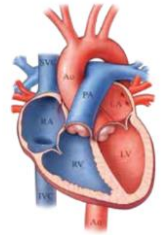


# The Loyola Administrative Perinatal Center Presents

## The Cardiac S.T.A.B.L.E. Program



**Tuesday, October 7, 2025, 8:00am – 4:00 pm**

**Loyola University Medical Center (Maguire Bldg., Room 2891)**

Approximately 8 babies per 1,000 live births (just under 1% of all babies born) will have some form of congenital heart disease (CHD) worldwide. This equals 1.35 million babies born each year with CHD. The United States sees an annual birth rate just under 4 million, with 439,000 infants having CHD. Of these, ~25% will have the most severe forms, known as critical congenital heart defects (CCHDs). These infants require care by neonatal and cardiac experts in the first days to weeks of life. Prompt, effective care of neonates with CHD can reduce secondary organ damage, improve short- and long-term outcomes, and reduce mortality.

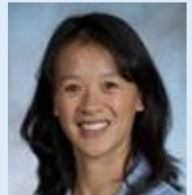
S.T.A.B.L.E. Cardiac Module, 2<sup>nd</sup> edition, 2021.

### Learning Outcomes:

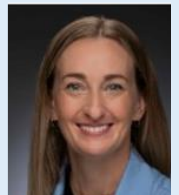
After this educational activity, the learner will be able to recognize congenital heart disease (CHD) and improve stabilization skills, as evidenced by identification of physical signs and symptoms of CHD and knowledge of pre-transport stabilization techniques specific for CHD.

### Our Speakers:

**T. Marsha Ma, MD** is a Pediatric Cardiologist and Associate Professor of Pediatrics at Loyola University Medical Center. Board Certified in Pediatrics and in Pediatric Cardiology, Dr. Ma treats a variety of congenital heart disease, defects, and arrhythmias. She is an expert in adolescent heart disease and has a special interest in preventative pediatric cardiology.



**Kirsten Sorum**, Neonatologist, completed her fellowship training at Loyola University and has over a decade of experience taking care of babies with CHD at Advocate Christ Medical Center Oak Lawn Campus. Advocate Christ's NICU has a dedicated team focused on caring for babies with cardiac-related diagnoses, including neonates with pre-operative CHD. Their Center for Fetal Care uses a multidisciplinary approach to provide guidance and treatment for mothers carrying fetuses with complex diagnoses. Neonatologists collaborate with the Pediatric Cardiac Intensivists in caring for post-operative neonates in the Pediatric Cardiac ICU, on ECMO, and an array of other cardiac-related diagnoses. Advocate Christ's NICU is also a major referral center for Piccolo device PDA closure as well.



Loyola University Health System is accredited as a provider of nursing continuing professional development by the American Nurses Credentialing Center's Commission on Accreditation. No one with the ability to control content of this activity has a relevant financial relationship with an ineligible company.

### Successful Completion Requirements to Receive 7 contact hours for nursing:

- Learner's signature on attendance sheet prior to the start of the conference.
- Learner's attendance of the program in its entirety and participation in all activities of the program.
- Learner's submission of a completed evaluation at the conclusion of the program.



**REGISTRATION: \$50.00 - Refunds up to 3 days before event**

Scan QR Code or Register link: [REGISTER HERE](#)

or go to <https://www.loyolamedicine.org/APC> > Outreach Education tab

Register by October 2. Please bring your own lunch/purchase at Loyola.

Questions? Olivia at [OliviaR.Baldwin@luhs.org](mailto:OliviaR.Baldwin@luhs.org) or Lisa at [lfestle@lumc.edu](mailto:lfestle@lumc.edu)